



CLA4

Voice Range Column Loudspeaker

FEATURES

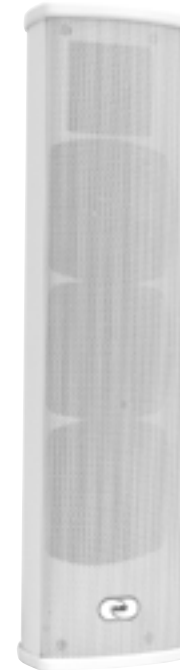
- Compact voice column
- Three 3 in LF drivers, one 2 in HF driver
- Includes multi-tap transformer for constant voltage systems

DESCRIPTION

The CLA4 is designed to provide excellent performance in voice reproduction and projection. Its line array configuration provides tight pattern control of the higher frequencies critical to intelligibility.

The integral, multi-tap line transformer provides operation in 70 V and 100 V constant voltage systems. A five-position rotary switch provides adjustment for the output power delivered in constant voltage systems.

CLA4's compact dimensions make it easy to integrate it into any environment. The enclosure is shaped to permit corner installation. Dedicated accessories provide flexibility and ease of installation. The enclosure is constructed of galvanized steel with a stove-enamelled white finish. A metal grille protects the drivers and provides a clean cosmetic. Five year warranty.



APPLICATIONS

- Houses of Worship
- Museums
- Distributed Systems
- Theme Parks
- Transportation Terminals
- Retail Spaces
- Commercial Offices
- Schools

CONFIGURATION

Subsystem		
	Transducer	Loading
LF	3 x 3 in cone	Sealed
HF	1 x 2 in soft dome	Direct radiating
Operating Mode		
Single amp	LF/HF	

PERFORMANCE

Operating Range	
140 Hz to 20 kHz	
Transformer Taps (watts)	
70 V	30 / 15 / 7.5 / 3.75 / 1.9
100 V	30 / 15 / 7.5 / 3.75
Accelerated Life Test	
70 V	30 W @ 167 ohms
100 V	30 W @ 333 ohms

PHYSICAL

Enclosure		
Galvanized steel, steel grille		
Dimensions (inches / mm)		
H x W x D	15.2 x 3.7 x 3.7	387 x 94 x 95
Weight (approximate net lb / kg)		
	5.1	2.3